

# Refuge House

Watergate Row, Chester

To Let Fully refurbished  
DDA compliant city centre  
offices, available for  
immediate occupation



# Refuge House

Watergate Row, Chester



To Let Fully refurbished DDA compliant city centre offices, available for immediate occupation

## About

City centre office accommodation right in the heart of the thriving retail and business district. Owned and managed by north west based HMG, Refuge House has been extensively refurbished and is ready for immediate occupation.



# Refuge House

Watergate Row, Chester



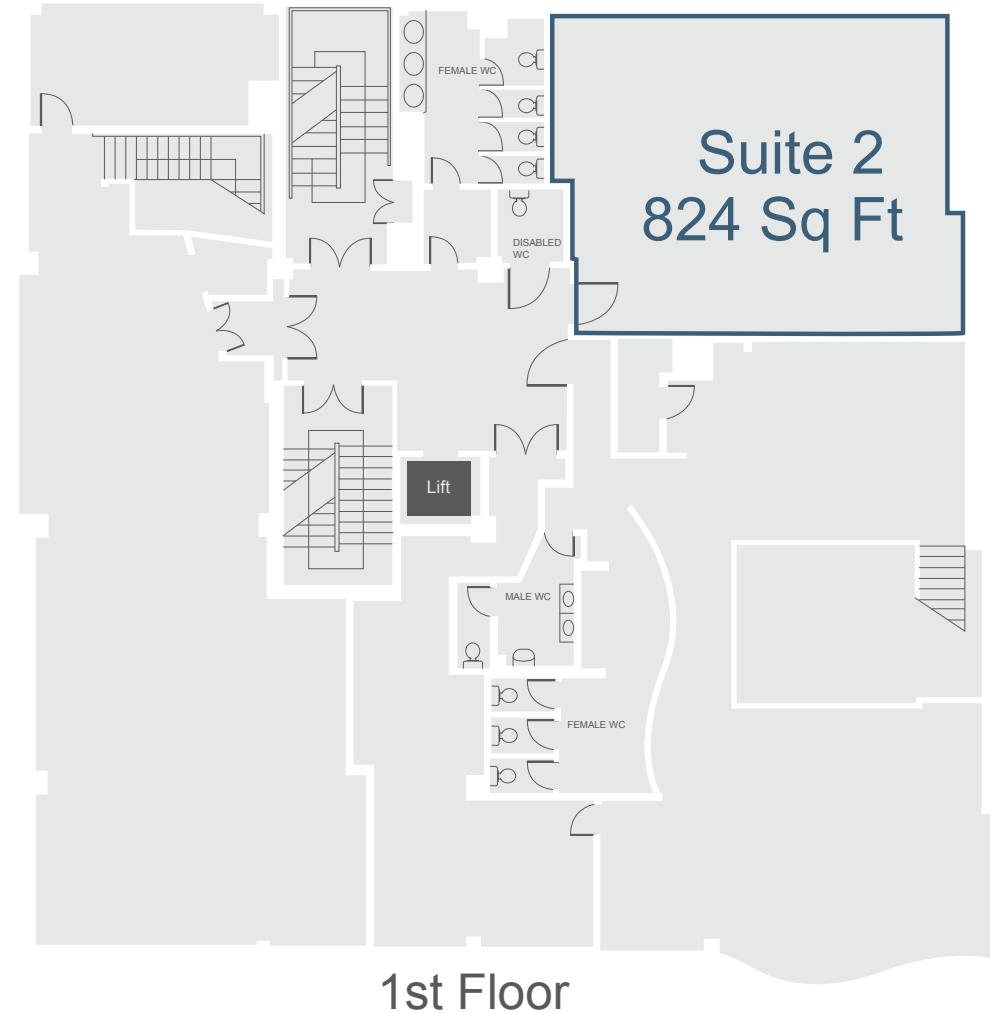
To Let Fully refurbished DDA compliant city centre offices, available for immediate occupation

## Specification

- Fully DDA compliant
- Intercom and card controlled main entrance
- Male and female WCs on each floor
- Feature reception area
- Open plan office accommodation
- Excellent natural light
- Perimeter trucking
- Suspended ceilings with Cat II recessed lighting
- Kitchen facilities
- Disabled W.C.

## Availability

Floor	Suite	Sq Ft
First	2	824
Third	1	635



1st Floor

# Refuge House

Watergate Row, Chester



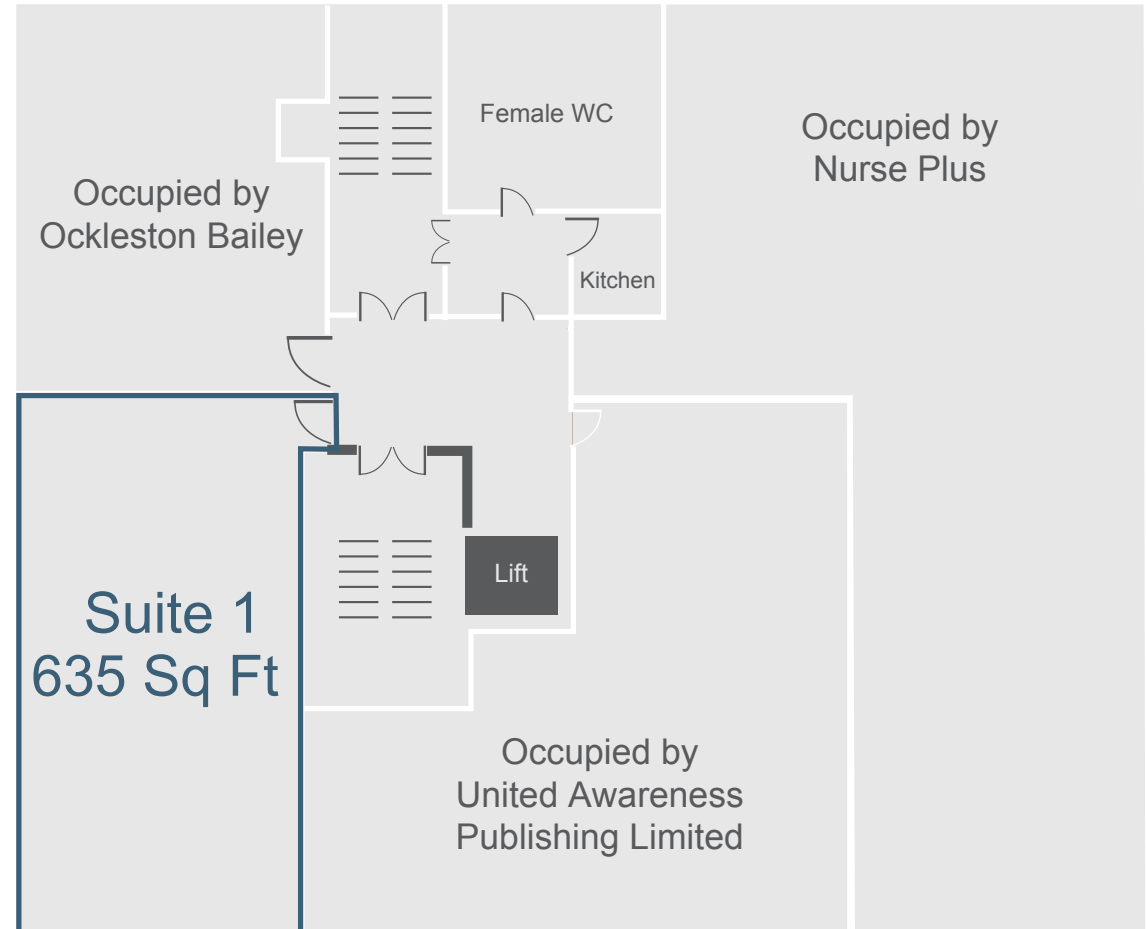
To Let Fully refurbished DDA compliant city centre offices, available for immediate occupation

## Specification

- Fully DDA compliant
- Intercom and card controlled main entrance
- Male and female WCs on each floor
- Feature reception area
- Open plan office accommodation
- Excellent natural light
- Perimeter trucking
- Suspended ceilings with Cat II recessed lighting
- Kitchen facilities
- Disabled W.C.

## Availability

Floor	Suite	Sq Ft
First	2	824
Third	1	635



3rd Floor

# Refuge House

Watergate Row, Chester



To Let Fully refurbished DDA compliant city centre offices, available for immediate occupation



## Term

High competitive flexible lease arrangements are available.

## Rent

Upon application.

## Legal Costs

Legal costs: Each party is to be responsible for their own legal costs.

## VAT

All prices quoted are exclusive of vat, which will be charged at the prevailing rate.

## Epc

An EPC is available upon request.

# Refuge House

Watergate Row, Chester



To Let Fully refurbished DDA  
compliant city centre offices,  
available for immediate occupation



GALLERY SCROLL >

# Refuge House

Watergate Row, Chester



To Let Fully refurbished DDA compliant city centre offices, available for immediate occupation



GALLERY SCROLL >

# Refuge House

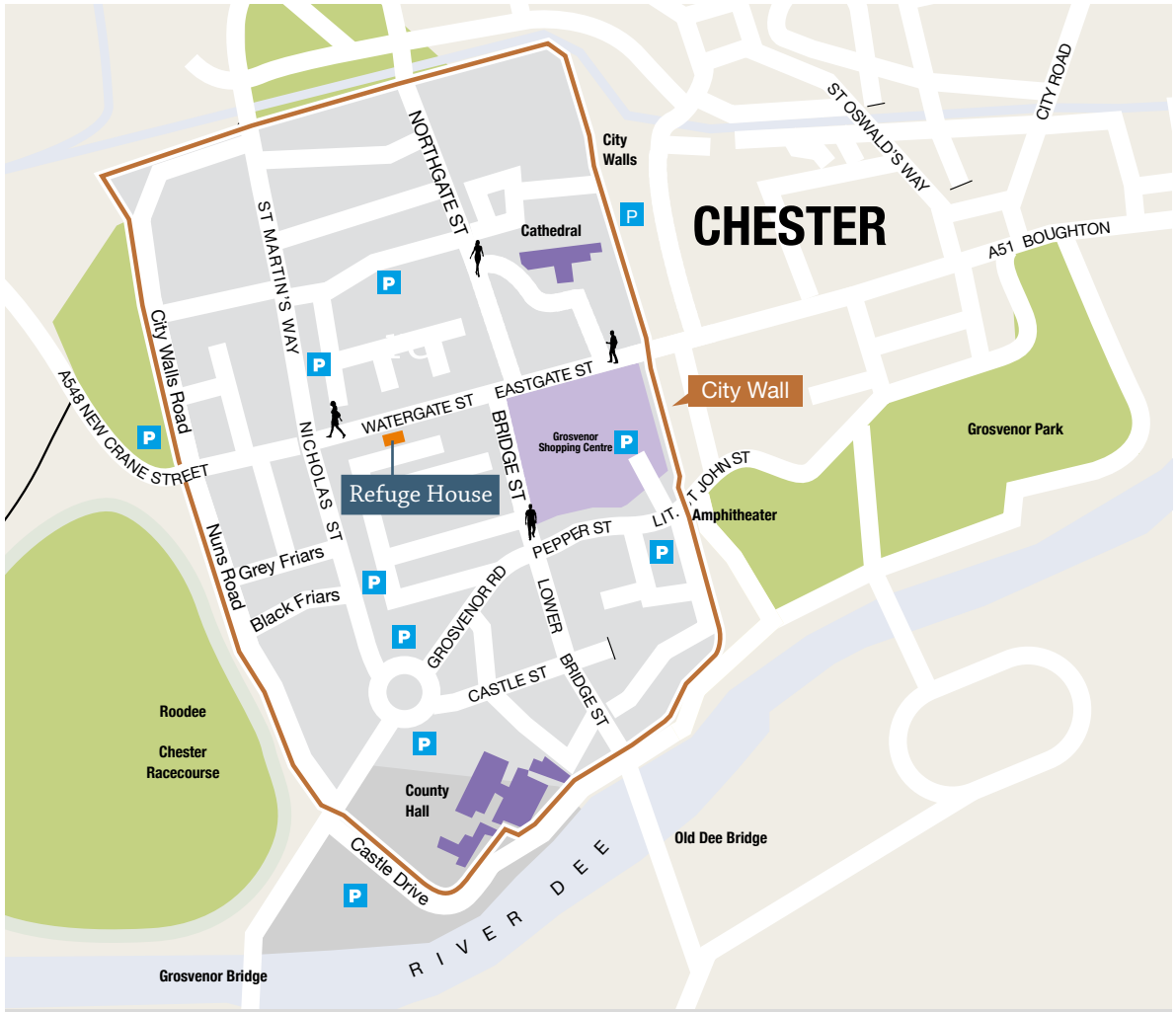
Watergate Row, Chester



To Let Fully refurbished DDA compliant city centre offices, available for immediate occupation

**Location**

Refuge House is situated on the south side of Watergate Street and is approached from row level close to all amenities including the Town Hall, bus station, shops and restaurants. Watergate Street is within the inner ring road and City Walls and is one of the principal retail thoroughfares in Chester.





# Refuge House

Watergate Row, Chester



To Let Fully refurbished DDA compliant city centre offices, available for immediate occupation



## Viewing

Further information is available through:

Will Sadler [willsadler@legatowen.co.uk](mailto:willsadler@legatowen.co.uk)

**LegatOwen**  
CHARTERED SURVEYORS  
**01244 408200**  
[www.legatowen.co.uk](http://www.legatowen.co.uk)

Jonty Goodchild [jonty@boltonbirch.com](mailto:jonty@boltonbirch.com)

**Bolton Birch**  
[www.boltonbirch.com](http://www.boltonbirch.com)  
**01244 311 681**

Vicki Cook [vcCook@hollinsmurray.co.uk](mailto:vcCook@hollinsmurray.co.uk)



**0161 929 5666**  
[info@hollinsmurray.co.uk](mailto:info@hollinsmurray.co.uk)

Misrepresentation Act 1967. Unfair Contract Terms Act 1977 The Property Misdescriptions Act 1991. These particulars are issued without any responsibility on the part of the agent and are not to be construed as containing any representation or fact upon which any person is entitled to rely. Neither the agent nor any person in their employ has any authority to make or give any representation or warranty whatsoever in relation to the property. June 2018. RB&Co 0161 833 0555. [www.richardbarber.co.uk](http://www.richardbarber.co.uk)